

Glitch Busters

April 2022



Warbirds Over Delaware 2022 — July 13 - 16, 2022

Antiques and Classics at Lums Pond — July 30, 2022

Photo courtesy of Sam Winder

The next General Membership Meeting will be held on Saturday May 7, 2022 at the Flying Field Pavilion. The meeting will start at 11:00AM.

Spring Cleanup was held on Saturday April 2nd. Many volunteers came out to help which made quick work of the project. Thanks to everyone who assisted!

Grass cutting to resume starting Thursday April 14th. The field will be cut every Thursday morning, weather permitting.



April 2022 General Membership Meeting - April 2, 2022

The meeting was called to order at 11:00AM by President Greg Schock. Club members introduced themselves with a little bit of their personal history in the Club and model aviation.

The May General Membership Meeting date has been set for Saturday May 7th to be held at the Flying Field Pavilion starting at 11:00AM. Rain date will be Saturday May 14th.

A reminder to all Club members to be sure to secure the field and lock the entrance gate if you are the last to leave the field. The speed limit on the entrance road is 5mph. Park Rangers will ticket speeders. Also, reminder that all vehicles are now required to have a State Park Entrance pass, either a daily or annual sticker.

The Spring Work Party was held Saturday April 2nd. Many volunteers showed up to assist which made quick work of the project.

Treasury Report - Treasurer Mike Denest gave a report of the current Club Treasury.

Old Business -

Warbirds Over Delaware event planning was discussed.

The Antiques and Classics at Lums Pond event has been rescheduled for Saturday July 30, 2022

Greg Schock reported on the needed repairs to the pavilion. Quotes have been received with the lowest quote coming in at \$12,000. It was discussed that the repairs could be done at a significant lower cost, approx \$1,000 in material, if done by Club members.

New Business -

Steven King announced that he is working with DAFB to have a giant scale static display stand at **2022 Thunder Over Dover Air Expo and Open House** for Saturday and Sunday, May 21-22, 2022 at DAFB. If you are interested in providing a model and assisting, please contact Steven at captnking@me.com

Grass cutting to resume in April. Grass will be cut every Thursday morning, weather permitting. If you would like to volunteer with grass cutting, please contact Mike Watson at mikewatson217@msn.com

Field rolling was discussed and will be scheduled when permitted after a good rain.

Mike Watson has been in contact with the Park regarding planting new trees on the south end of the parking/spectator area. Trees native to Delaware will be planted upon approval.

Tony Albence has researched on having a Club flag created. A 3x5 or 4x6 double-sided flag will cost between \$100.00 and \$111.00.

Safety Report -

The Safety Committee discussed the current Safety Proposal recommendations. Please review and send any questions, comments, suggestions or concerns to info@delawarerc.org

Show & Tell -

Paul Bryk displayed a DeHavilland Vampire 90mm EDF Composite 1410mm jet. The fuselage was coated in a polyurethane clearcoat by Tony Albence.

The meeting was adjourned at 12:17PM



Grass cutting 4/15



From The Safety Corner — by Mike Watson

SAFETY TIPS FOR HAVING SUCCESSFUL AND FUN FLIGHTS WITH YOUR MODELS

- * Always check and make sure your model is completely operational and nothing on it needs to be repaired before leaving home.
- * Make sure you have everything with you to support your model when you arrive at the field, Tools, Fuel, Batteries, ETC.
- * If your model is new, and ready to be maiden, give it a good once over and have someone look with you. Two heads and two pairs of eyes are better than one!
- * Always range check your model!
- * After adding fuel or batteries, depending on how your model is powered, perform a preflight check on all flight surfaces.
- * Before starting your model if it is fuel, make sure it is tethered properly, if battery powered, use your throttle cut until you are in the taxi area.
- * Be highly aware of your surroundings, if others are flying, check the direction of the pattern. Always takeoff and land into the wind to initiate the pattern if it has not already been established.
- * When flying, always be aware of the obstacles around you, trees, poles, etc. Also be aware of your flying boundaries, the pits, parking areas etc.
- * 99.8% of those flying will be flying on 2.4Ghz, so there is no need to be spread out up and down the field. Pilots can stand comfortably 3 to 10 feet apart and communicate their intentions to each other without yelling. When you have loud models, gassers, EDF's, etc. flying at the same time, it makes for a highly stressful situation when you are trying to takeoff, land, low on fuel or battery power or deadstick. Yelling out your intentions and no one hears you, due to everyone being spread out and loud models, can spell disaster for your model. Also being closer together adds more fun to the picture by increasing the camaraderie among the pilots.
- * Flying from mid field is always the best flying spot on the field. You have the best of both worlds from either direction. Your takeoffs and landings will also improve.

More From The Safety Corner— by Mike Watson

Proposal to the Board and Members of the Delaware R/C Club

Please review and send any questions, comments, suggestions or concerns to info@delawarerc.org

From: The Safety Review Committee

Mike Watson, Chair
Dick Steward, Member
Victor Pugarelli, Member
Doug VanDeroef, Member

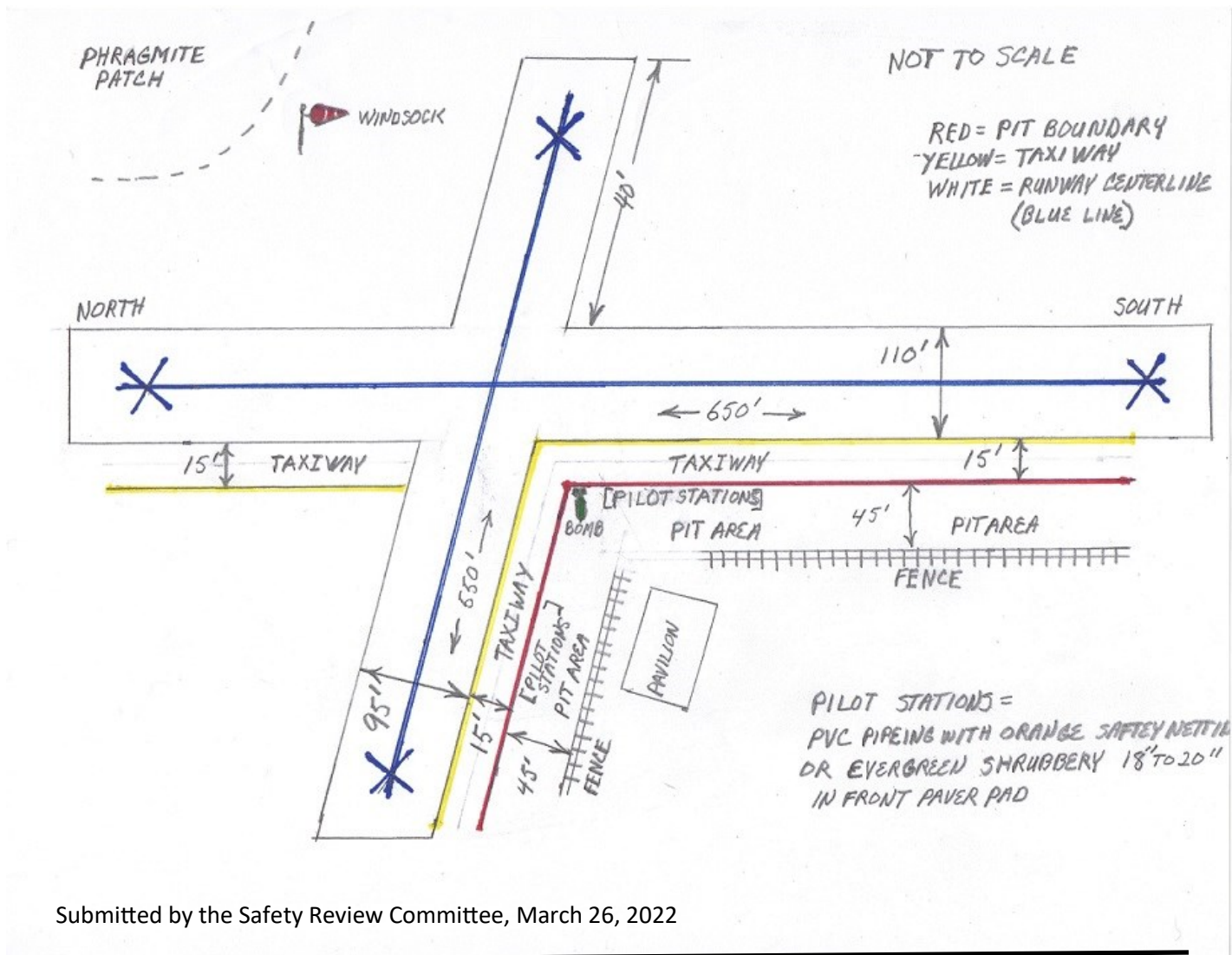
This proposal was created by reviewing and following AMA guidelines and policies that can be found on the AMA website in the media section for reference.

This proposal was also created not only with safety in mind, but to also increase the flying experience, enjoyment of the club's experienced pilots, and enhance the abilities of the club's newer pilots experience, along with beautifying and making the field more functional and increasing membership.

For ongoing reference: the north by south runway shall be the "MAIN" runway and the northwest by southeast runway, which is now called the heli-drone runway, shall be called the "ALTERNATE" runway. As stated by AMA guidelines, all fixed winged aircraft shall take off and land into the wind.

1. The contents of the "Lums Pond Flying Field Rules" and the "Attention" signs have been reviewed and shall be updated accordingly.
(Content and wording to be provided by the Committee.)
2. The existing frequency Board shall be repurposed (and renamed "Field Information") with content related to current AMA guidelines and policies. AMA states that 2.4GHz is the preferred and recommended frequency, 53MHz and 27MHz are prohibited. 72MHz usage is at the pilot's own risk and responsibility. The frequency tags will be relocated to another area as specified by the Board. The frequency board shall be repurposed, containing arial photos of the runways showing "no fly boundaries", AMA content, and Club content. (Images to be provided by the Committee.)
3. The windsock shall be placed on the far side of the "MAIN" runway, near the edge of the phragmite patch, and be approximately 20 feet high. The new placement will allow pilots to keep their eyes on their aircraft and the windsock without having to turn around. The new placement will have visibility from both runways.
4. The windsock shall determine the flying pattern, as the field is prone to extreme crosswinds.
5. The "ALTERNATE" runway's useable width and length shall be established as appropriate. Both runways will be mowed and rolled regularly to the extent it is practical and sensible.
6. New runway line markings shall be painted on both runways as follows: (Diagram to be provided.)
 - a. A "RED" line marking the outer extent of the pit area. The fence is reference; the line is painted 45 feet out from the fence on both runways, which lines up with the bomb on both runways.
 - b. A "YELLOW" line painted 15 feet from the "RED" line, which creates a 15-foot wide taxiway on both runways.
 - c. A "WHITE" line down the centerline of both runways, which will improve takeoffs and landings of everyone. (Specifics as to how and who will do this, as well as costs, to be provided by the Committee).
7. New pilot stations made from PVC piping and orange safety netting, or 18-inch tall evergreen shrubs placed midfield on both runways. These stations will allow up to 15 to 20 pilots and their spotters to stand safely behind them, and will be event friendly (Warbirds). These stations are created to pull the pilots closer together, whereas there will be no need to yell up and down the field when taking off, landing or going to retrieve an aircraft on the field. When flying on 2.4GHz, there will be no need for everyone to be spread out up and down the field. This brings the pilots close together and be able to communicate with each other.
8. Existing start up stands will be refurbished with 3 new stands to be built to accommodate larger aircraft for field assembly only. The three larger stands will be equipped to aid those with medical issues such as back problems, knee problems, etc. from having to roll around on the ground, kneel, etc.

Continued Next Page



media sec

perienced
asing mer

now calle
and into t



Photo courtesy of Sam Winder



Photo courtesy of Sam Winder



Photo courtesy of Sam Winder



Photo courtesy of Sam Winder

From the Editor

If you would like to submit an article, photos, suggestions, hints/tips/how-to's, or anything else for the Club Newsletter, please email your submission to news@delawarerc.org

Call for Volunteers for R/C Flight Instruction

The Club is in need of additional volunteers to assist with R/C Flight Instruction for Fixed-Wing, Rotary/Heli, and Drone aircraft. If you can assist with this important Club service please send an email to info@delawarerc.org and let us know how you can assist.

Useful Links

Club Website <http://delawarerc.org>

Academy of Model Aeronautics <http://www.modelaircraft.org>

Academy of Model Aeronautics National Model Aircraft Safety Code <http://www.modelaircraft.org/files/105.pdf>

AMA Media Room <http://www.modelaircraft.org/aboutama/mediaroom.aspx>

FAA Registration <https://faadronezone.faa.gov/#/>

FAA TRUST Test <https://www.modelaircraft.org/trust>

FAA NOTAMS/TFRs <http://www.modelaircraft.org/membership/clubs/notams.aspx>

B4UFLY Mobile App https://www.faa.gov/uas/recreational_fliers/where_can_i_fly/b4ufly

Glitch Busters

is a monthly publication of the Delaware R/C Club

www.delawarerc.org

President: Greg Schock

Vice President: Dave Moyer

Treasurer: Michael Denest

Secretary/Newsletter Editor: Rob Pleasanton

Safety Officer: Mike Watson

Club Contact: info@delawarerc.org